

# SPIRAL STAIRWAY ORDER GUIDE

## DESIGN SERVICE

In a hurry? Too busy? Complicated installation?  
Complete this form and let us design and quote your stair.

**Model name/number** \_\_\_\_\_

**1 Diameter** \_\_\_\_\_ (4" smaller than finished opening)

**2 Height** \_\_\_\_\_ (finished floor to floor)

**Building Code** \_\_\_\_\_ (if known)

**The basic stair design includes the following:** **ANY CHANGES**

Construction..... KD (disassembled) \_\_\_\_\_

Material..... steel \_\_\_\_\_

Center column finial..... painted cap \_\_\_\_\_

Tread surface..... carpet grade \_\_\_\_\_

Platform surface..... carpet grade \_\_\_\_\_

Closures ..... none \_\_\_\_\_

Risers ..... none \_\_\_\_\_

Color..... Classic colors (see Paint + Finishes tab) \_\_\_\_\_

Miscellaneous ..... \_\_\_\_\_

### Your Choice

Include a sketch or photocopy of the floorplan and have us do the design work,  
or you can define the following:

**3 Platform** \_\_\_\_\_ **4 Rotation** \_\_\_\_\_

**Other specifications** \_\_\_\_\_

\_\_\_\_\_

\_\_\_\_\_

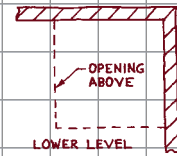
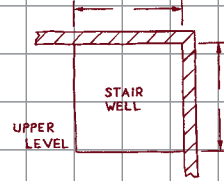
\_\_\_\_\_

\_\_\_\_\_

\_\_\_\_\_

\_\_\_\_\_

**example:**



**DRAW FLOORPLAN  
SKETCH BELOW:**

### Design and quote request from:

**Name** \_\_\_\_\_

**Company** \_\_\_\_\_

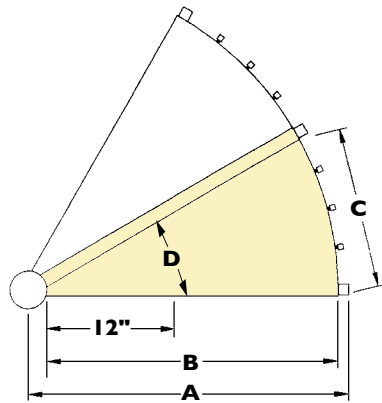
**Address** \_\_\_\_\_

**Phone** \_\_\_\_\_ **Fax** \_\_\_\_\_

**E-mail** \_\_\_\_\_

# SPIRAL STAIRWAY ORDER GUIDE

**1 Diameter** Common sizes of spiral stairways range from 3 1/2' to 6' diameter. A 5' diameter spiral stair meets requirements of many building codes. Custom diameters are available upon request. The finished opening should be 4" larger than the stair diameter to assure proper handrail clearance.



## Tread Dimensions

Diameter	3 1/2'	4'	4 1/2'	5'	5 1/2'	6'
A (radius)	21"	24"	27"	30"	33"	36"
B	18"	21"	24"	27"	30"	33"
C @ 30°	10 1/4"	11 3/4"	13 1/4"	15"	16 1/2"	18"
D @ 30°	7 1/2"	7 1/2"	7 1/2"	7 1/2"	7 1/2"	7 1/2"
C @ 27°	9 1/4"	10 3/4"	12"	13 1/2"	14 3/4"	16 1/4"
D @ 27°	6 5/8"	6 5/8"	6 5/8"	6 5/8"	6 5/8"	6 5/8"

(Dimensions C & D are from the nosing of one tread to the nosing of the next tread.)

**2 Height** Measure the vertical distance from finished floor to finished floor. The stair is not adjustable.

**Tread quantity** is determined by finished floor to floor height divided by 9.5.

- 88 to 95" ..... 9 treads
- > to 104 1/2" ..... 10 treads
- > to 114" ..... 11 treads
- > to 123 1/2" ..... 12 treads
- > to 133" ..... 13 treads
- > to 142 1/2" ..... 14 treads
- > to 144" ..... 15 treads

Stairs are available to any height. Multiple story spirals are available. Please inquire.

## 3 Platform Style

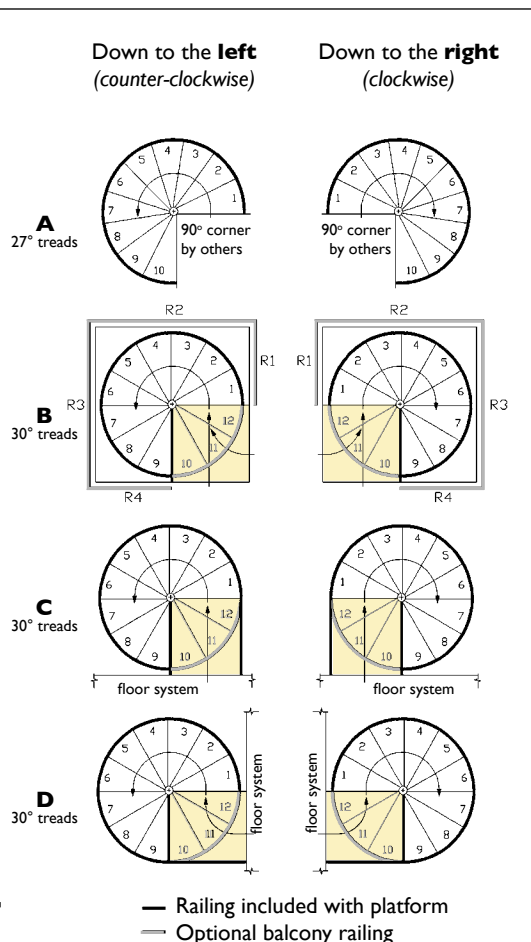
**A No platform** 90° corner by others. Shown with 27° treads (see Degree of Rotation at right). Please determine the upper floor system thickness and then check with us.

**B** Designed for use in a stairwell. The stairwell is assumed square unless specified round or otherwise. "B" platforms connect at two sides to the opening. If the finished opening is not 4" larger than the stairway, please provide dimensions.

**C** Designed for attaching to a balcony and has railings on two sides.

**D** Designed for attaching to a balcony and has an "L" shaped railing on two sides.

**Custom** platforms are often required when access is limited. Please check with us.



## 4 Direction of Rotation

Down to the **left** (counter-clockwise)

Down to the **right** (clockwise)

### Degree of Rotation

**30°** Many building codes require 30° treads. Spiral stairs with platform B, C or D are supplied with 30° treads unless specified otherwise.

**27°** Stairs with No Platform are supplied with 27° treads to increase headroom under your 90° corner (unless specified otherwise).

**WARNING:** 27° treads may not meet your building code requirements.

**Custom** tread rotation is also available.

# SPIRAL STAIRWAY ORDER GUIDE

## Custom Iron Balcony Railings

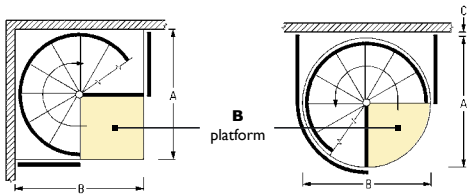
- **Custom Iron balcony railings can NOT be cut to length on site.**

Custom Iron balcony railings are very sturdy because they are built to job specifications. All posts are welded to the railing.

- **Let us determine the railing lengths.** Supply a sketch of the finished opening with your order, including drywall or other finish material. The examples in this section illustrate the type of information required for Custom Iron to build your railings accurately.

- **Safety** Custom Iron balcony railing is designed 36" tall with spaces less than 4", unless specified otherwise. This complies with most residential building code requirements.

- **Your Custom Iron balcony railings will fit well and install easily.**

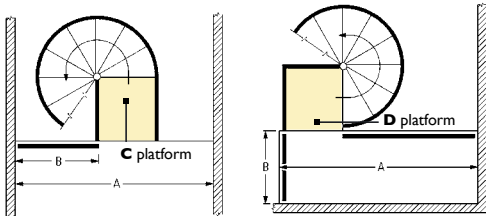


### Square opening

A & B are finished opening dimensions. (down to the right)

### Round opening

A & B are finished opening dimensions. C is the distance from the finished opening to the finished wall. (down to the left)



### Balcony or loft railing

A & B are finished balcony dimensions. (down to the left)

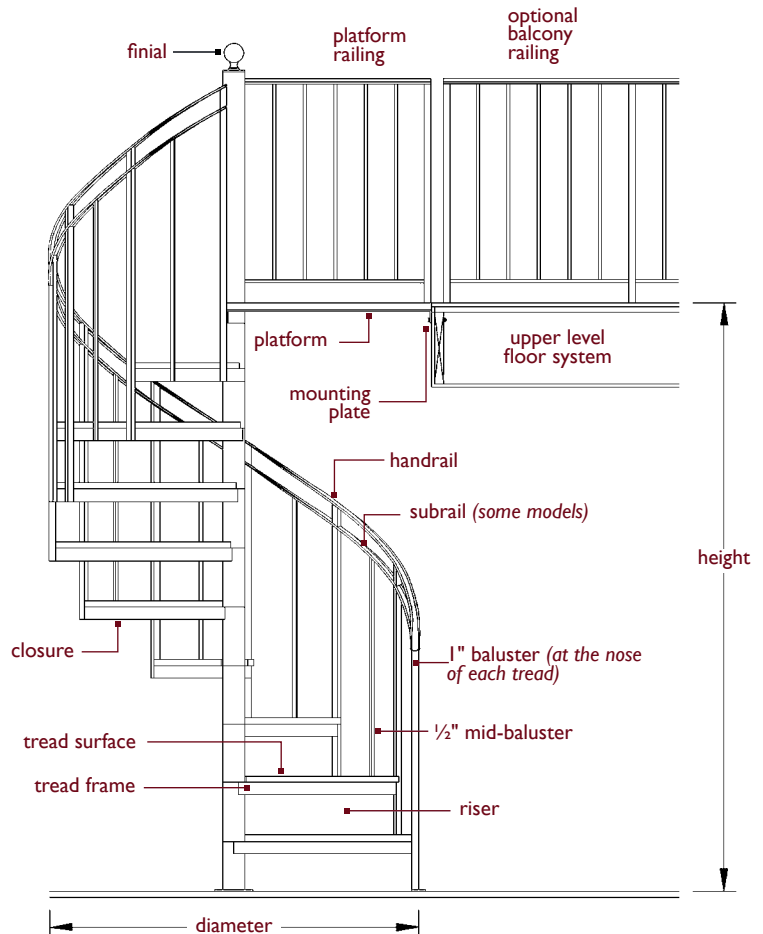
## Mid Baluster Quantity & Spacing

### Diameter of your stair

3½'	4'	4½'	5'	5½'	6'
(2) 3"	(2) 3½"	(3) 3"	(3) 3¼"	(3) 3¾"	(4) 3¼"

### (Quantity) Spacing between mid balusters

## Glossary of terms



# SPIRAL STAIRWAY ORDER GUIDE

## TECHNICAL SPECIFICATIONS

### Construction

**KD** Unless specified otherwise, all spiral stairs are shipped **“Knocked-Down”**. A KD stair is NOT A KIT. Enjoy the confidence of knowing your stair is completely assembled during fabrication. This minimizes field assembly time and assures a quality product.

**SU** A stair that's shipped **“Set-Up”** has all welded connections. It can't be knocked down.

**KIT** Kit stairs require fabrication during installation. Custom Iron Spiral Stairs are **not available** in kits. See CI vs. Kit stairs comparison sheet on page 26 in the Spiral Stairs section.

**Material** A variety of materials can be used for the basic stair construction (*center column and tread frames*).

- Steel (assumed unless specified otherwise)
- “Galvanized” Steel (actually zinc plated steel)
- Aluminum (will usually have tapered tread legs)
- Stainless Steel (brushed finish)

### Exterior Stairs

*Aluminum or Galvanized Steel* are recommended for exterior applications to prevent corrosion. A Set-Up steel stair is also an option, however packing and freight costs can be substantial.

*A KD steel stair is intended for interior use only.*

*Wood* All hardwood is sanded to 80 grit. Finish is by others. Hardwood railcaps are supplied long to be job fit.

### Tread & Platform Surfaces (*all thicknesses listed below are actual*)

We can build to any specifications, however, unless specified otherwise, the following specifications will be applied to your order.

- **Frame Only:** A pattern is supplied. The stair will be built for your ¾" particle board with carpet.
- **Carpet Grade:** ¾" high-density particle board on the treads and ¾" CDXU plywood on the platform.
- **Red Oak Edge:** 1½" Red Oak & ¾" particle board
- **Hardwood:** A 1" tread is available for all sizes.
- **Cedar Deck:** 1" x 5¼" decking
- **Pan:** Built for your application. Our standard pan is made of 12 gauge steel and is 1¼" deep.
- **Smooth or Checkerplate:** 12 gauge steel is standard
- **Radial Grate:** The maximum space is less than 1"
- **Glass Block:** 1" thick block set into a special pan
- **Laminated Glass:** 1" thick laminated glass set into a special frame
- **Laser Cut:** Custom designs using ¼" steel bar or aluminum material

**Risers** Custom Iron open riser staircases (open riser is standard for most models) do not meet the 4" sphere code requirement. If you must comply with the 4" sphere code requirement, we offer four riser options.

**Closure** Available to conceal the bottom of the tread frame. Depending on the tread surface chosen, flathead screws may be visible. They can be puttied, sanded smooth and painted over during installation.